

ISSUE OR REVISION		
NO.	ISSUED FOR	DATE
5	60% CONTRACT DOCUMENTS	2020.09.28
8	90% CONTRACT DOCUMENTS	2020.12.03
12	BUILDING PERMIT	2023.07.07
14	100% CLIENT REVIEW PRE-TENDER	2023.10.17
19	TENDER	2025-10-30
22	ADDENDUM #7	2025-01-21

PROJECT :

YORK REGION PRS #33 RFTC

397-21

2960 TESTON ROAD, VAUGHAN

CLIENT

THE CONTRACTOR SHALL VERIFY ALL DIMENSIONS PRIOR
TO COMMENCEMENT OF THE WORK. ANY DISCREPANCIES
ARE TO BE REPORTED TO THE CONSULTANT.

ARCHITECT
THOMASBROWNARCHITECTS
197 SPADINA AVENUE, SUITE 505 | TORONTO ONTARIO | M5T 2C8

PROFESSIONAL SEAL

DWG TITLE

CLADDING, GLAZING AND LOUVER ELEVATIONS

ORIENTATION

N

TRUE NORTH

N

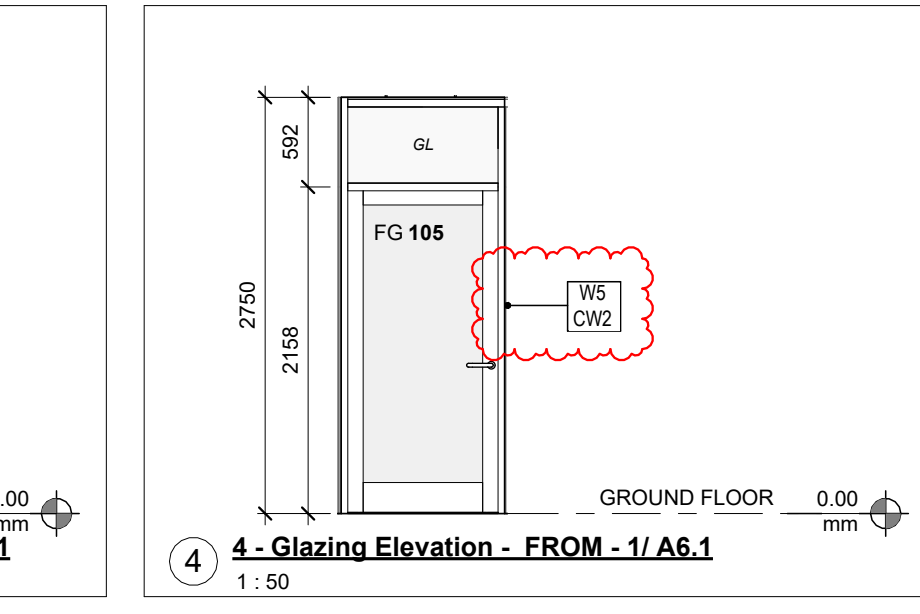
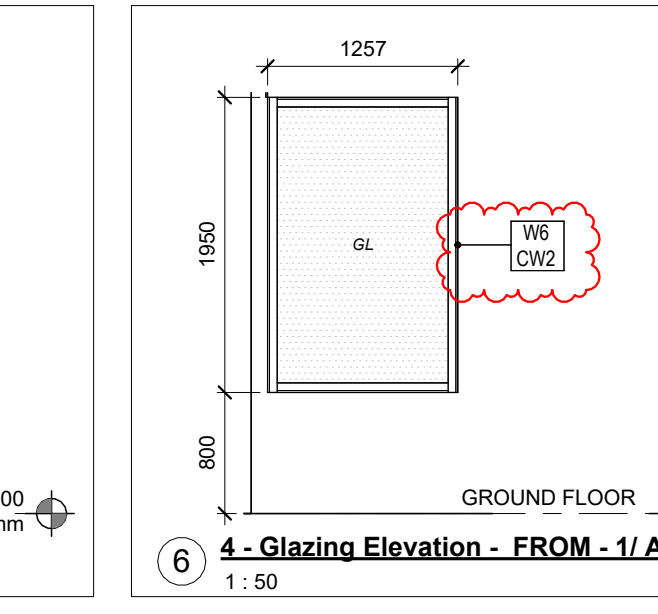
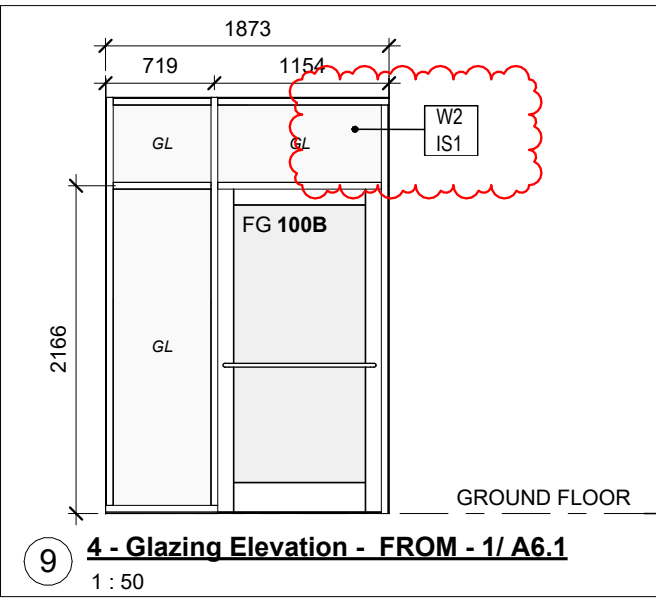
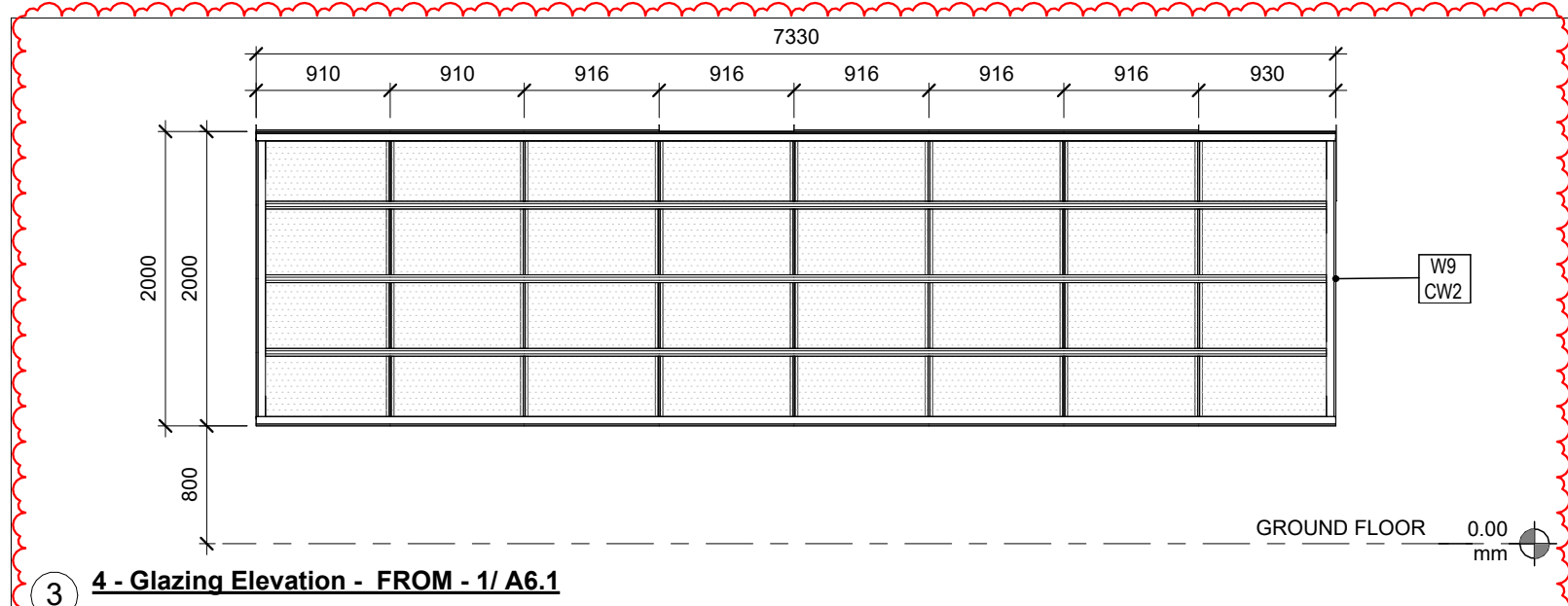
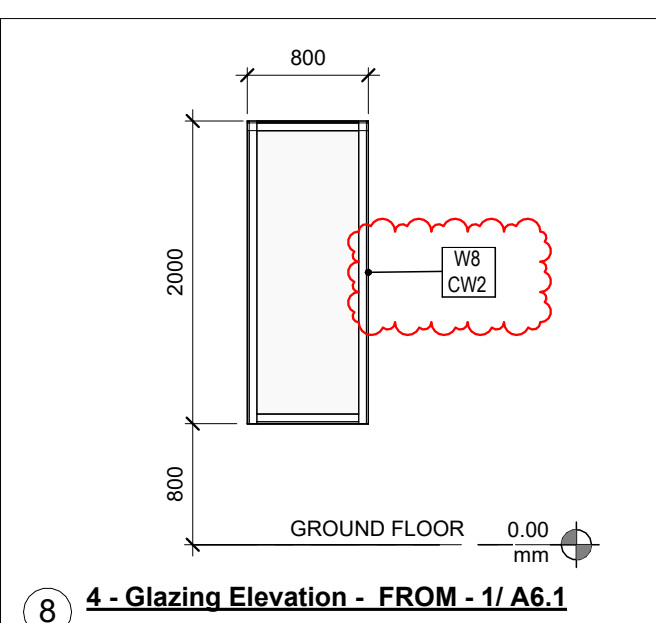
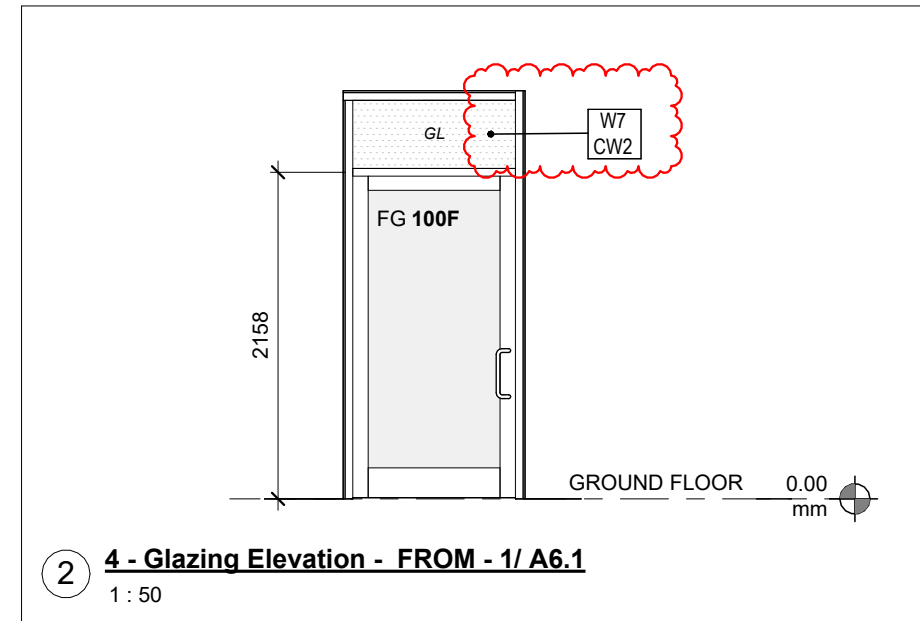
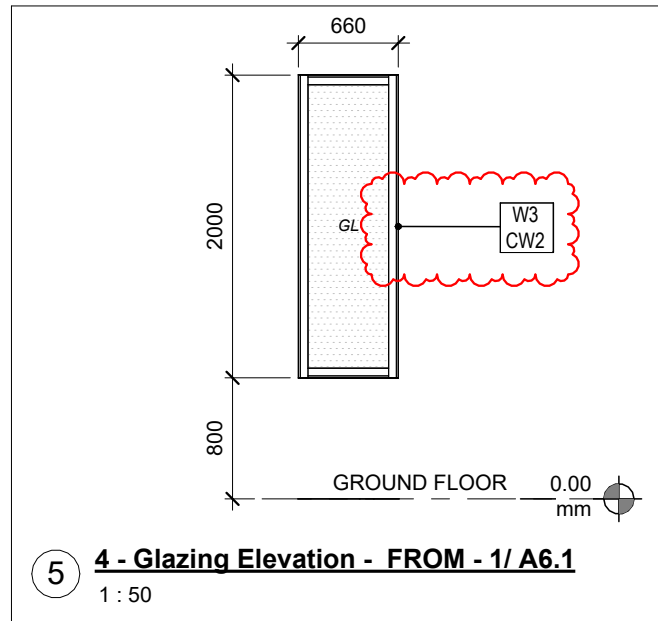
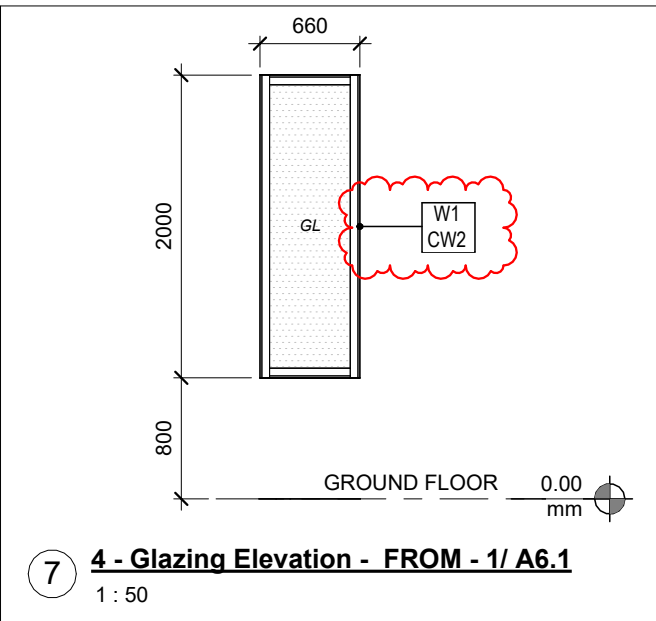
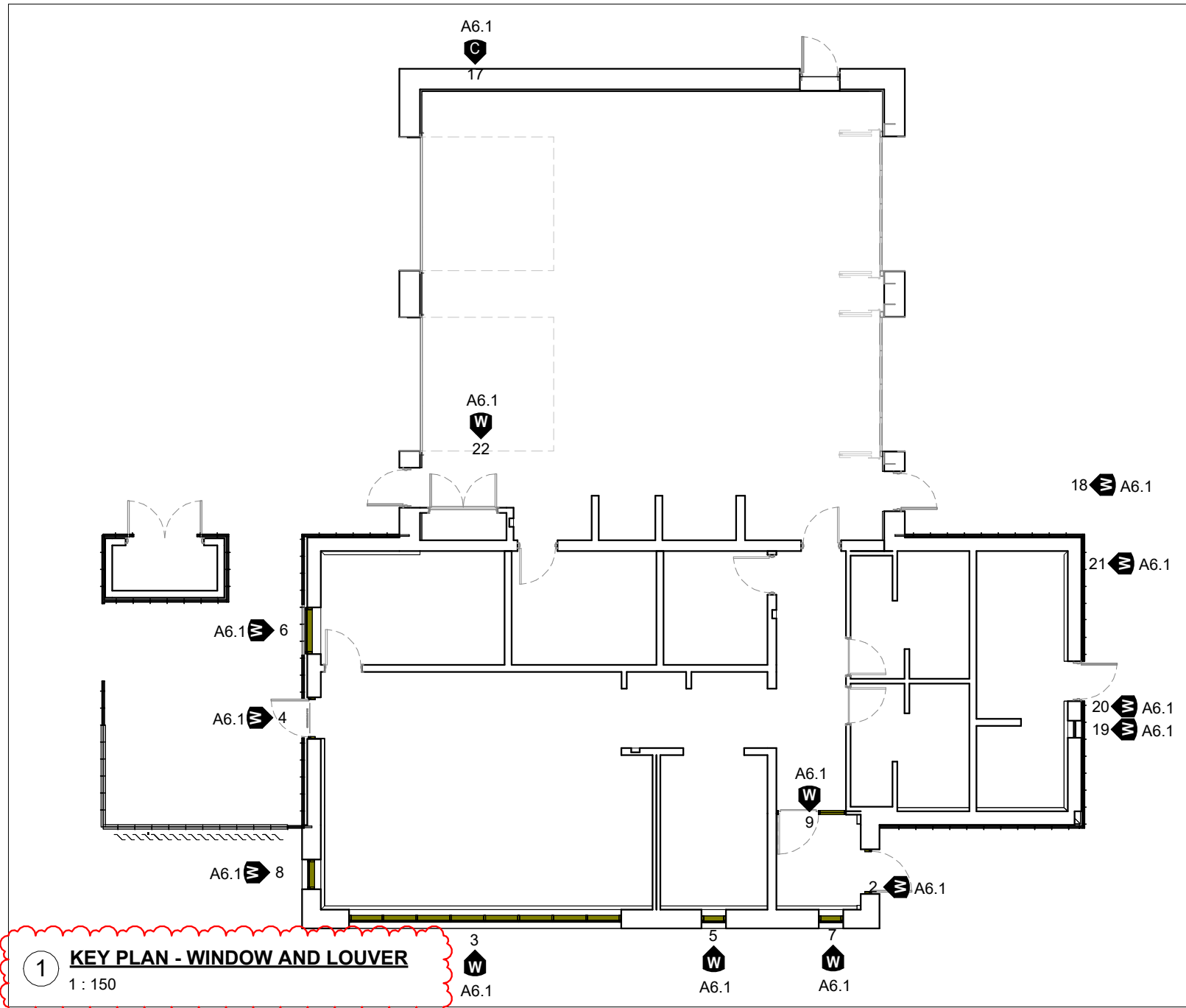
CONSTRUCTION NORTH

DATE 2020-11-18

PROJECT No. 1622

DRAWING No. A6.1

REVISION 22



SCHEDULE WINDOW - BASIS OF DESIGN

TYPE	SPECIFIED BASIS OF DESIGN
W1	BASIS OF DESIGN KAWNEER 1620 SSG OR EQUIVALENT
W2	BASIS OF DESIGN KAWNEER 451 OR EQUIVALENT
W3	BASIS OF DESIGN KAWNEER 1620 SSG OR EQUIVALENT
W4	BASIS OF DESIGN KAWNEER 1620 SSG OR EQUIVALENT
W5	BASIS OF DESIGN KAWNEER 1620 SSG OR EQUIVALENT
W6	BASIS OF DESIGN KAWNEER 1620 SSG OR EQUIVALENT
W7	BASIS OF DESIGN KAWNEER 1620 SSG OR EQUIVALENT
W8	BASIS OF DESIGN KAWNEER 1620 SSG OR EQUIVALENT
W9	BASIS OF DESIGN KAWNEER 1620 SSG OR EQUIVALENT

SCHEDULE LOUVER - BASIS OF DESIGN

TYPE	SPECIFIED BASIS OF DESIGN
L1	BASIS OF DESIGN MCGILL HP 245 OR EQUIVALENT
L2	BASIS OF DESIGN MCGILL HP 245 OR EQUIVALENT
L3	BASIS OF DESIGN MCGILL HP 245 OR EQUIVALENT
L4	BASIS OF DESIGN MCGILL HP 245 OR EQUIVALENT
L5	BASIS OF DESIGN MCGILL HP 245 OR EQUIVALENT
L6	BASIS OF DESIGN MCGILL HP 245 OR EQUIVALENT

*CONTRACTOR SHALL COORDINATE WITH MECHANICAL
DRAWINGS FOR INTAKE AND EXHAUST ACTIVE LOUVER
LOCATIONS.

ELEVATIONS MOVED TO SHEET A6.2

ELEVATIONS MOVED TO SHEET A6.2

ELEVATIONS MOVED TO SHEET A6.2

ELEVATIONS MOVED TO SHEET A6.2

ELEVATIONS MOVED TO SHEET A6.2

ELEVATIONS MOVED TO SHEET A6.2

